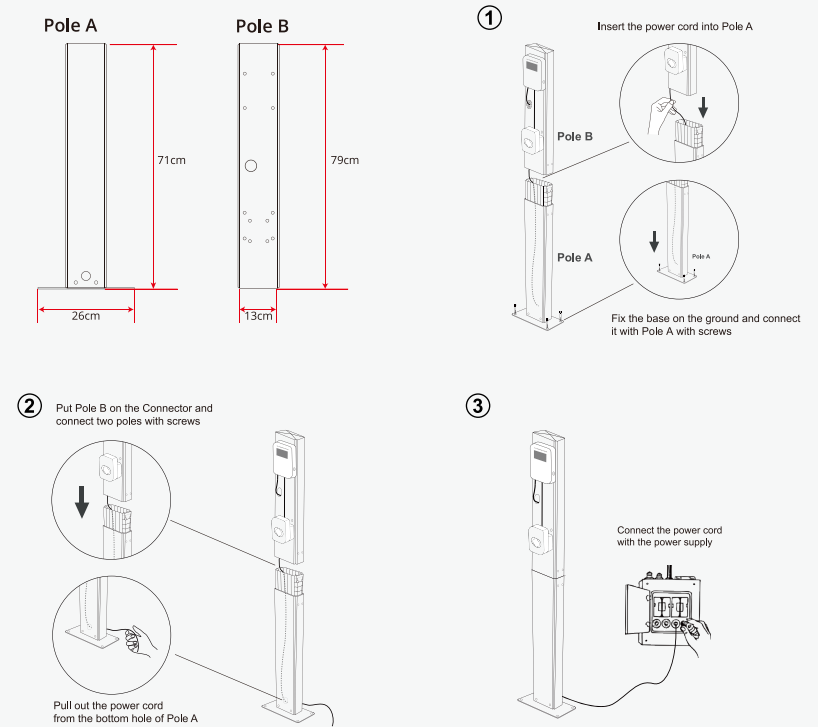




PRODUCT ADVANTAGES

- One-side or two-side punching available
- Cable management available
- Durability for all weather conditions
- Lighter and smaller package with less transportation cost

Quick installation



Installation pole BS-IT002

Width	13cm
Height	150cm
Base	26cm*14.5cm
Material	Aluminum Alloy
Weight	6.6kg
Pole A	
Width	13cm
Height	71cm
Pole B	
Width	13cm
Height	79cm